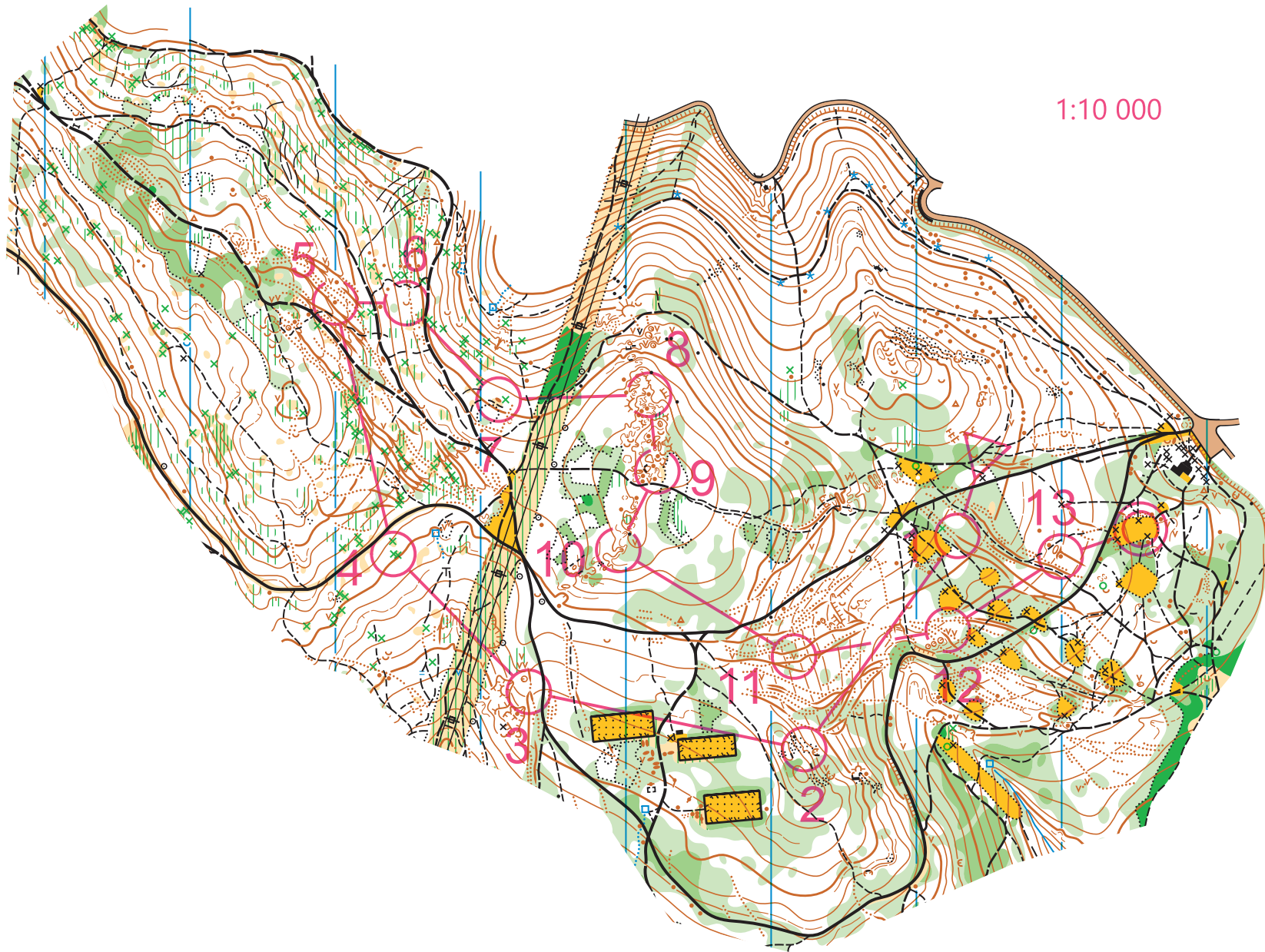


1:10 000

t1

t1		4,7 km		
▷		↗	↘	
1	38	⊥	∧	↖
2	39	∨	2x1	
3	40	∩	∪	
4	41	∧	↘	
5	42	↙	⊗	⊙
6	43	∪		
7	46	●		⊙
8	47	∪		
9	48	↖	●	⊙
10	49	↓	▨	↖
11	50	↗	∧	↖
12	45	●		⊙
13	51	↗	●	⊙
14	52	↗	∩	∪
15	53	⊥	∩	
16	54	↖	∨	2x1
17	37	●		
⊙		150 m		⊙



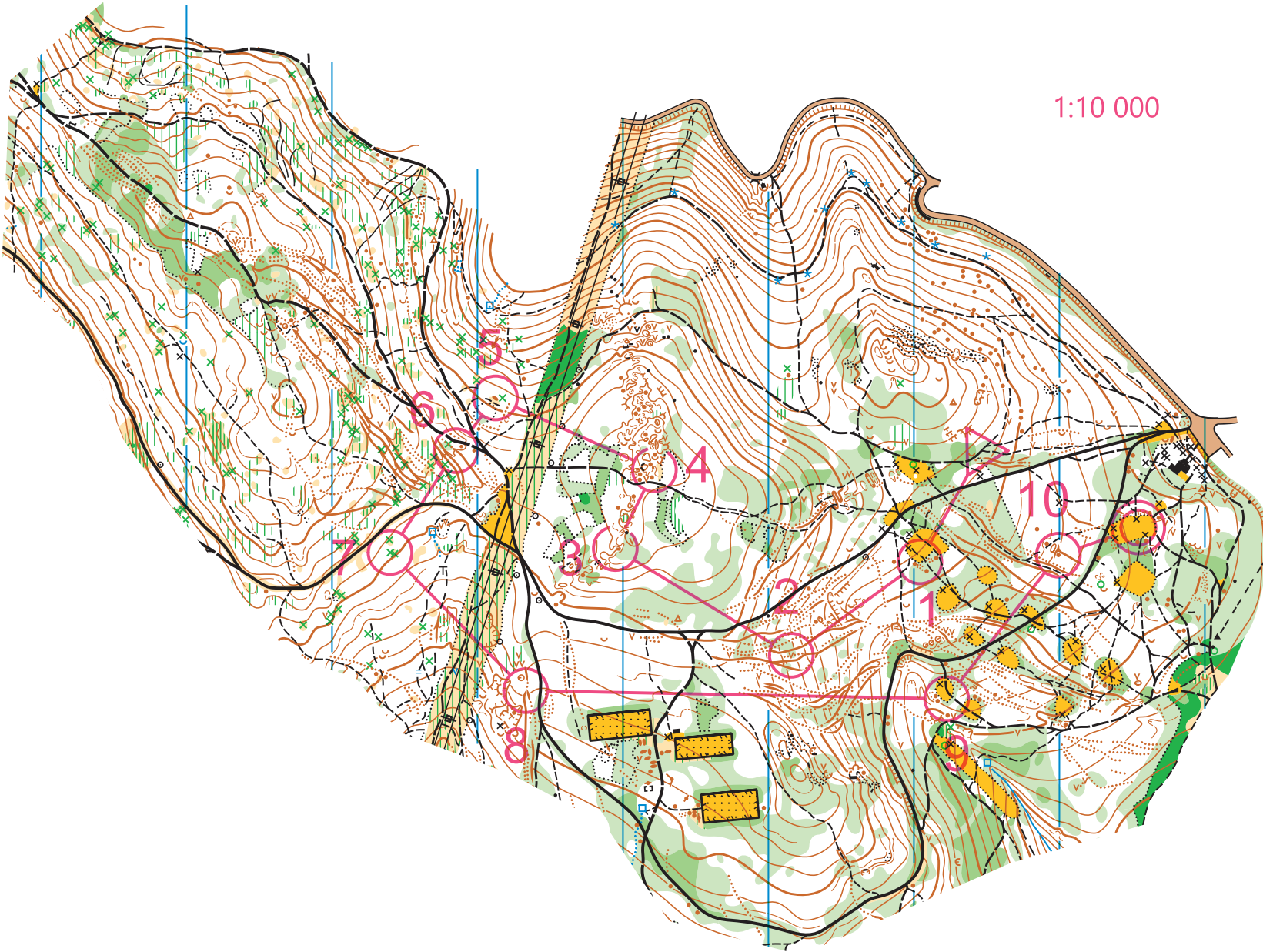
1:10 000

t2

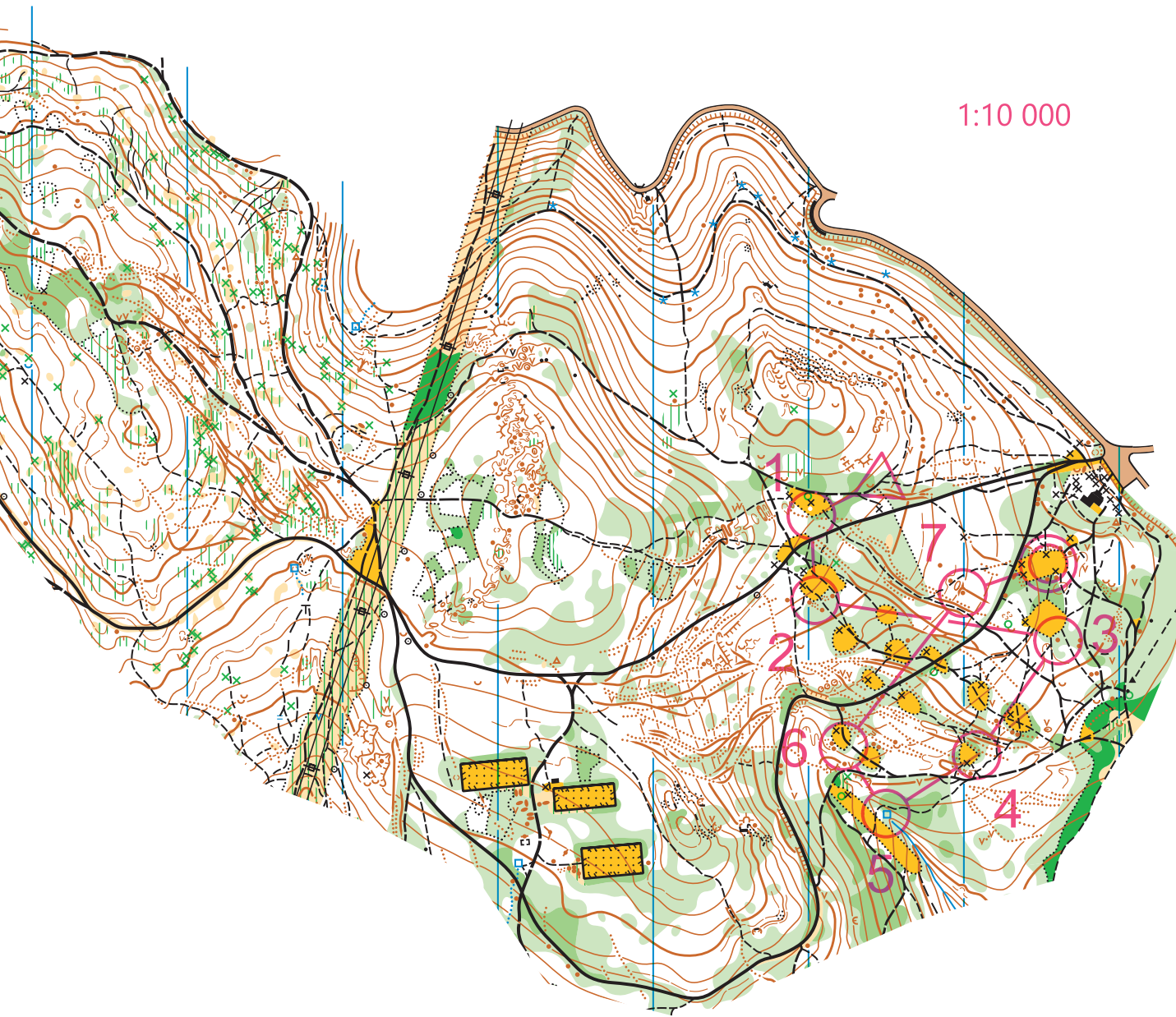
t2		3,8 km		
▷		↗	↘	
1	38	⊥	∧	↖
2	40	∩	∪	
3	41	∧	↘	
4	42	↙	⊗	⊙
5	46	●		⊙
6	43	∪		
7	45	●		⊙
8	51	↗	●	⊙
9	52	↗	∩	
10	53	⊥	∩	
11	39	∨	2x1	
12	54	↙	∨	2x1
13	37	●		
⊙	150 m			⊙

1:10 000

t3



t3		3,1 km		
▷		↗	↘	
1	32	◇		∇
2	39	∇	2x1	
3	53		∩	
4	52	↗	∩	∪
5	45	●		○
6	50	↗	∧	∩
7	42	↙	⊗	○
8	41	∧	↘	
9	36	◇		♀
10	37	●		
○	150 m			⊙



1:10 000

t4

t4		1,6 km		
▷		/	∟	
1	31	◇		⊙
2	32	◇		∇
3	33	●		
4	34	◇		➤
5	35	⌘		
6	36	◇		⊙
7	37	●		
⊙		150 m		⊙

lúka, J okraj
 lúka, J roh
 kôpka
 lúka, V roh
 prameň
 lúka, J okraj
 kôpka